

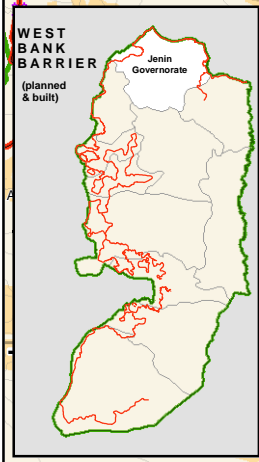
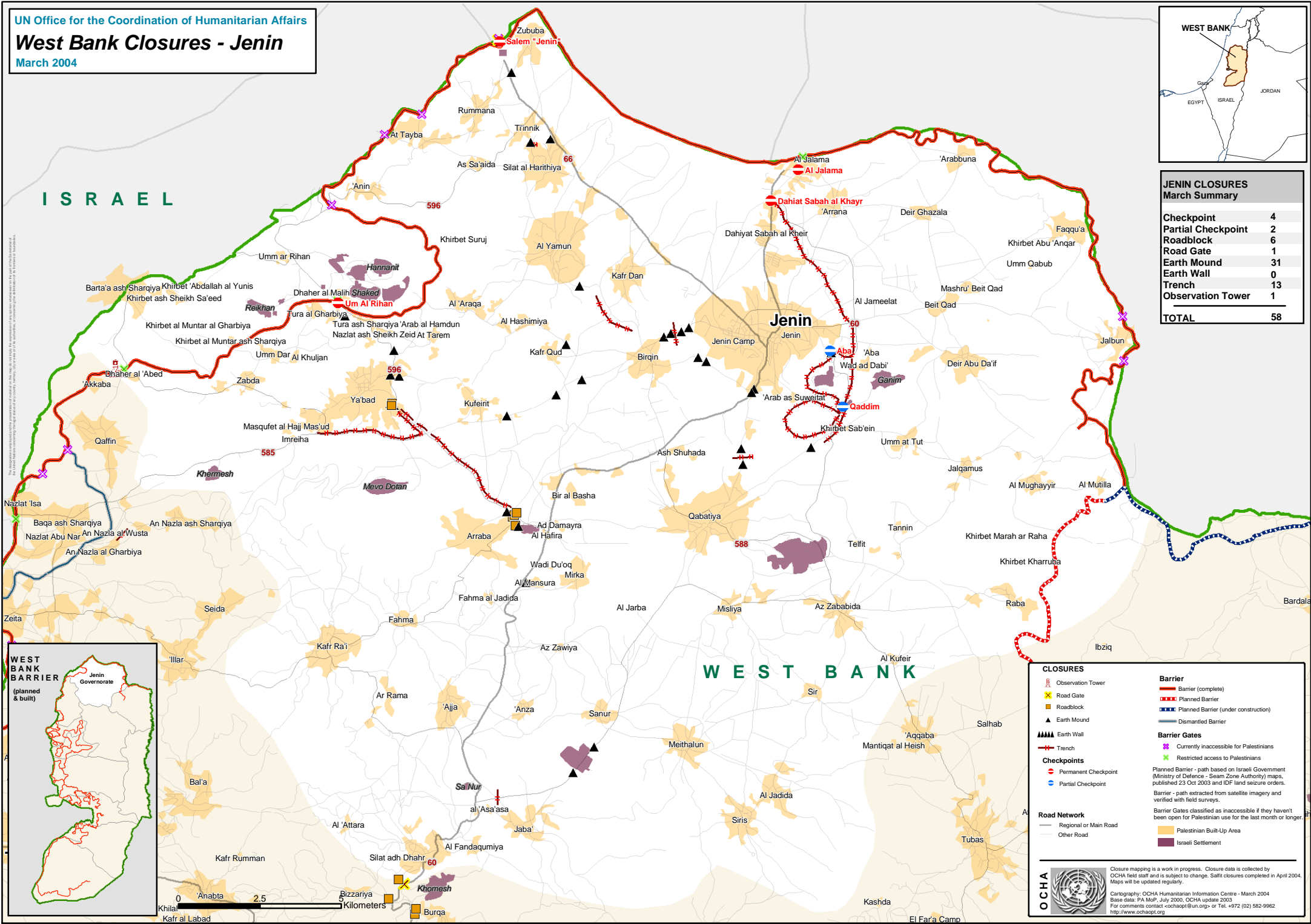
West Bank Closures - Jenin

March 2004



JENIN CLOSURES
March Summary

Checkpoint	4
Partial Checkpoint	2
Roadblock	6
Road Gate	1
Earth Mound	31
Earth Wall	0
Trench	13
Observation Tower	1
TOTAL	58



CLOSURES

- Observation Tower
- Road Gate
- Roadblock
- Earth Mound
- Earth Wall
- Trench
- Checkpoint
- Partial Checkpoint

Barrier

- Barrier (complete)
- Planned Barrier
- Planned Barrier (under construction)
- Dismantled Barrier

Barrier Gates

- Currently inaccessible for Palestinians
- Restricted access to Palestinians

Checkpoints

- Permanent Checkpoint
- Partial Checkpoint

Road Network

- Regional or Main Road
- Other Road

Other Symbols

- Palestinian Built-Up Area
- Israeli Settlement

Legend:

- Planned Barrier - path based on Israeli Government (Ministry of Defence - Seam Zone Authority) maps, published 23 Oct 2003 and IDF land seizure orders.
- Barrier - path extracted from satellite imagery and verified with field surveys.
- Barrier Gates classified as inaccessible if they haven't been open for Palestinian use for the last month or longer.

OCHA

Closure mapping is a work in progress. Closure data is collected by OCHA field staff and is subject to change. Staff closures completed in April 2004. Maps will be updated regularly.

Cartography: OCHA Humanitarian Information Centre - March 2004
Base data: PA MoP, July 2000, OCHA update 2003
For comments contact -ochaapt@un.org- or Tel. +972 (02) 582-9962
<http://www.ochaapt.org>

